



HealthCheck System Monitoring Guide

Version 1.1, November 2017

Table of Contents

1	Overview	3
1.1	Purpose	3
1.2	Intended Audience	3
2	HealthCheck Monitoring for HIE Web Services	3
3	Appendix	4

1 Overview

The OneHealthPort Health Information Exchange (HIE) provides the ability for organizations and vendors to set up processes to monitor system availability. HealthCheck, the monitoring system, is available for use by organizations and vendors that are connecting with web services and have operational policies requiring system monitoring. HealthCheck system monitoring is available for the OneHealthPort HIE user acceptance testing (UAT) and production (PROD) environments.

1.1 Purpose

The purpose of this document is to provide organizations and vendors with information for using HealthCheck to monitor system availability of the OneHealthPort HIE systems.

Important Note: Organizations and vendors that have policy requirements to perform system monitoring are expected to use HealthCheck for system availability monitoring. *Organizations and vendors are not to submit empty “test” messages to the OneHealthPort HIE systems to check for system availability.*

1.2 Intended Audience

This document is intended for:

- New organizations establishing connectivity with the OneHealthPort HIE and are required by operational policies to monitor system availability.
- Vendors with hosting services that are establishing connectivity with the OneHealthPort HIE for support of customer data submissions and are required by operational policies to monitor system availability.

2 HealthCheck Monitoring for HIE Web Services

The OneHealthPort HIE web services system availability can be monitored using HealthCheck. Organizations using tools for web services may (if required by operational policy) also set up connectivity with HealthCheck for system monitoring. The URLs for use in setting up monitoring with HealthCheck are shown below.

The Appendix shows an example of how to set up monitoring with HealthCheck if using SOAP UI. The process will vary depending on the connectivity tools used for setting up web services transactions.

OneHealthPort HIE HealthCheck URLs for System Monitoring

OneHealthPort HIE UAT (test) Environment - <https://uat-onehealthport-api.axwaycloud.com:8098/healthcheck>

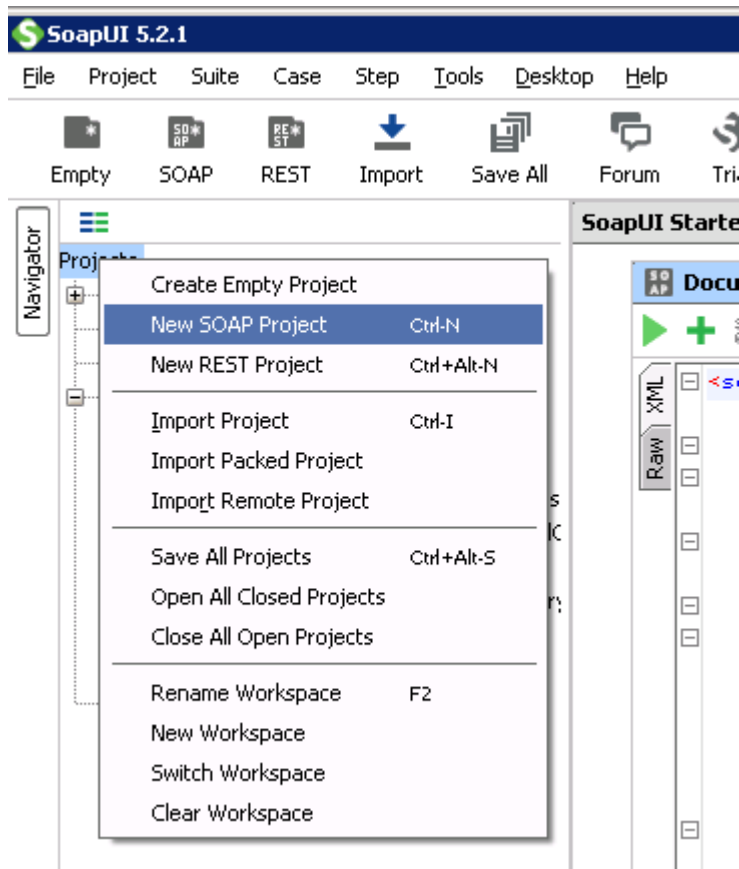
OneHealthPort Prod Environment - <https://onehealthport-api.axwaycloud.com:8098/healthcheck>

3 Appendix

HealthCheck can be set up using SOAP UI for the UAT and Prod environments using the following process.

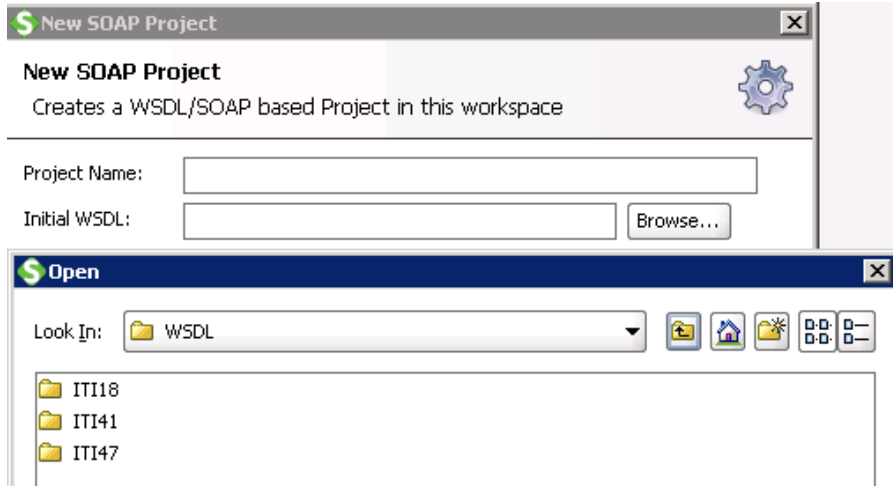
Step 1

Open SOAP UI. If there are no previous projects for ITI-41, ITI-47, or ITI-18 (web services transactions available at the OneHealthPort HIE), create a new SOAP project.



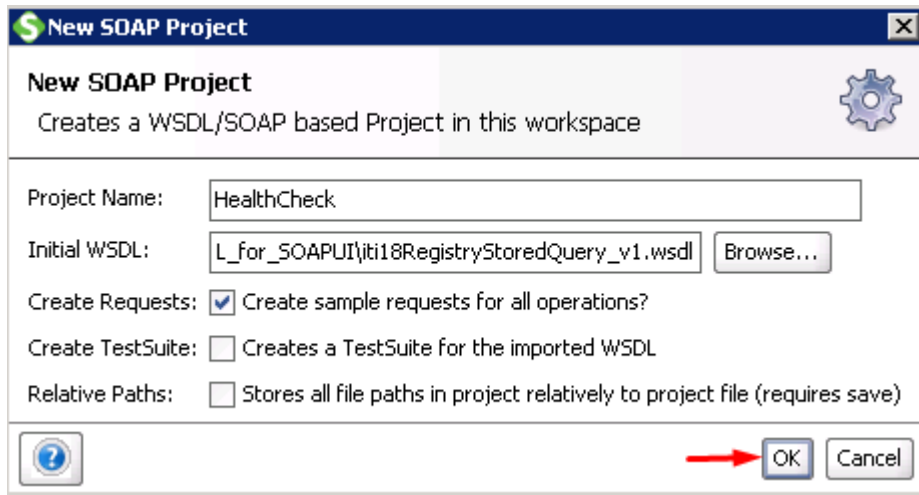
Step 2

Choose the initial wsdl from any of the ITI transactions already created.



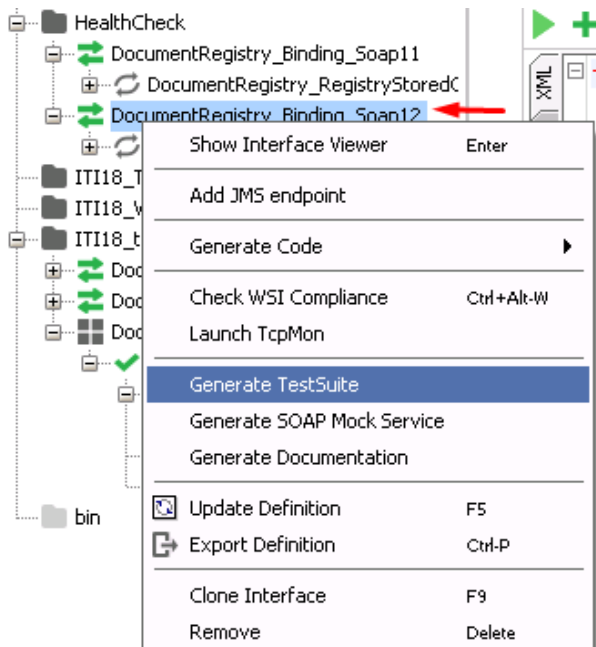
Step 3

Name the project 'HealthCheck' and after confirming the wsdl (in the example below, the wsdl for ITI18), click OK.



Step 4

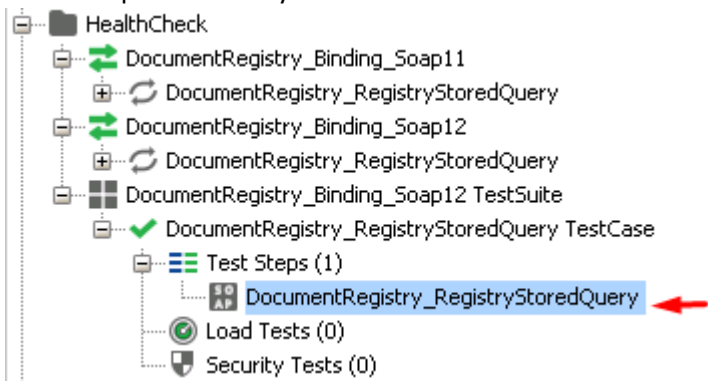
To create a Test Suite for the HealthCheck project, right-click on the SOAP12 binding (SOAP11 is forbidden) and click 'Generate Test Suite'.



Step 5

Click 'OK' for the next 2 pop outs.

1. Open the newly created Test Suite.



Step 6

The default URL will be as denoted as shown below (see red arrow).



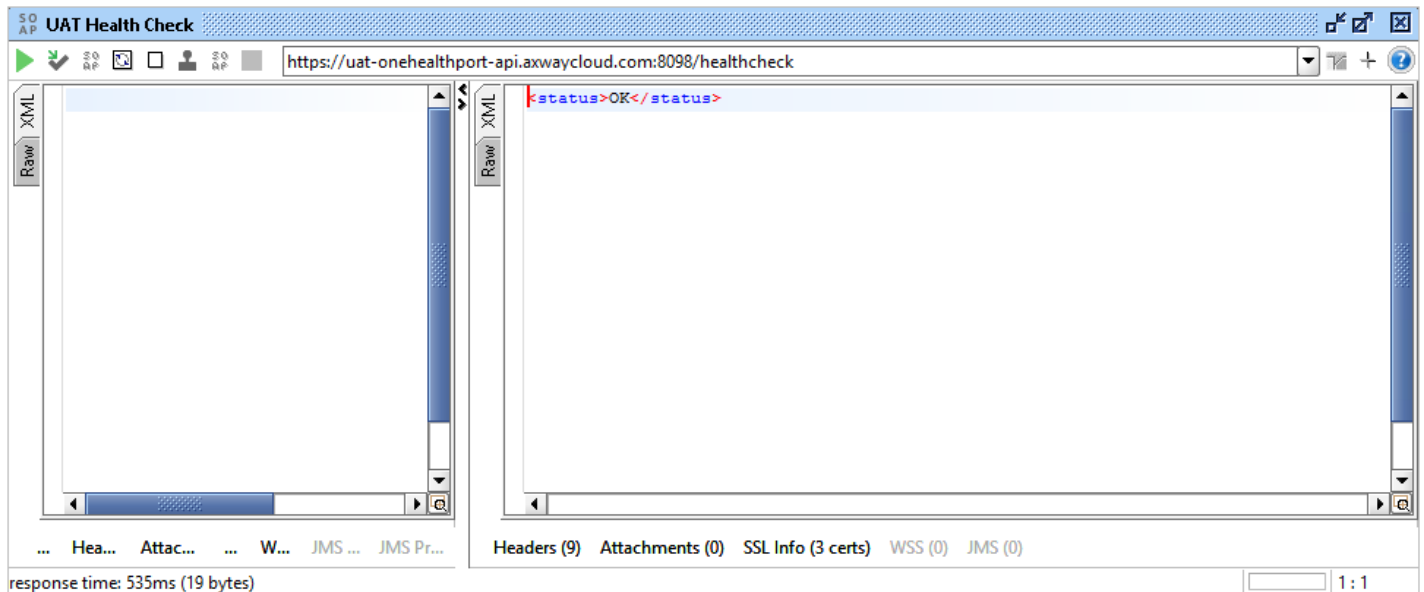
Change the URL to: <https://uat-onehealthport-api.axwaycloud.com:8098/healthcheck>
Click the 'Submit' (green triangle) button as shown.



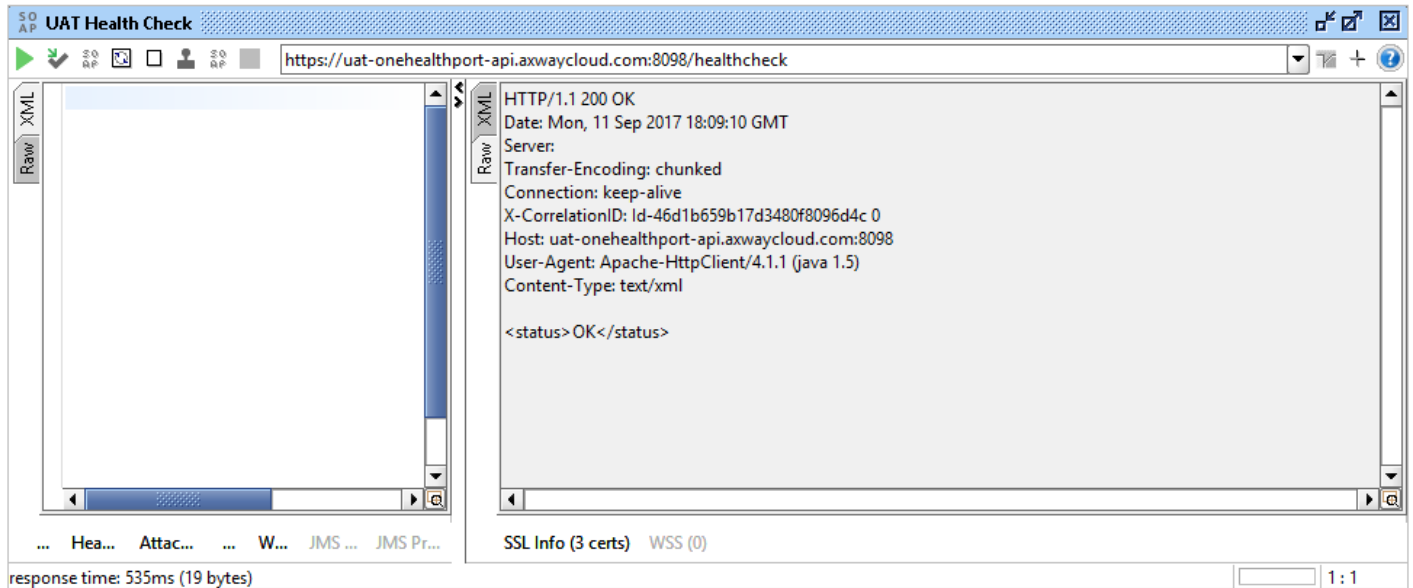
Note: The URL is the same as the URL for the ITI transfers available at the OneHealthPort HIE, except for the modification at the end.

Step 7

Once the set-up is completed the following responses will display:
UAT Health Check XML Response



UAT Health Check Raw Response - The RAW output shown below confirms that the API is up and running.

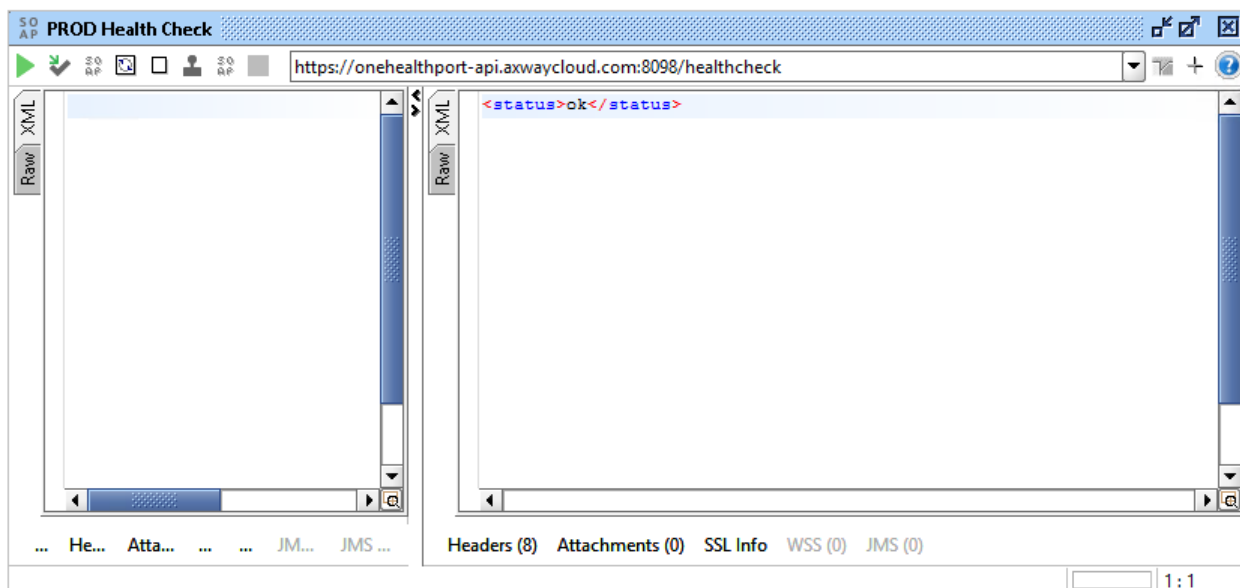


Step 8

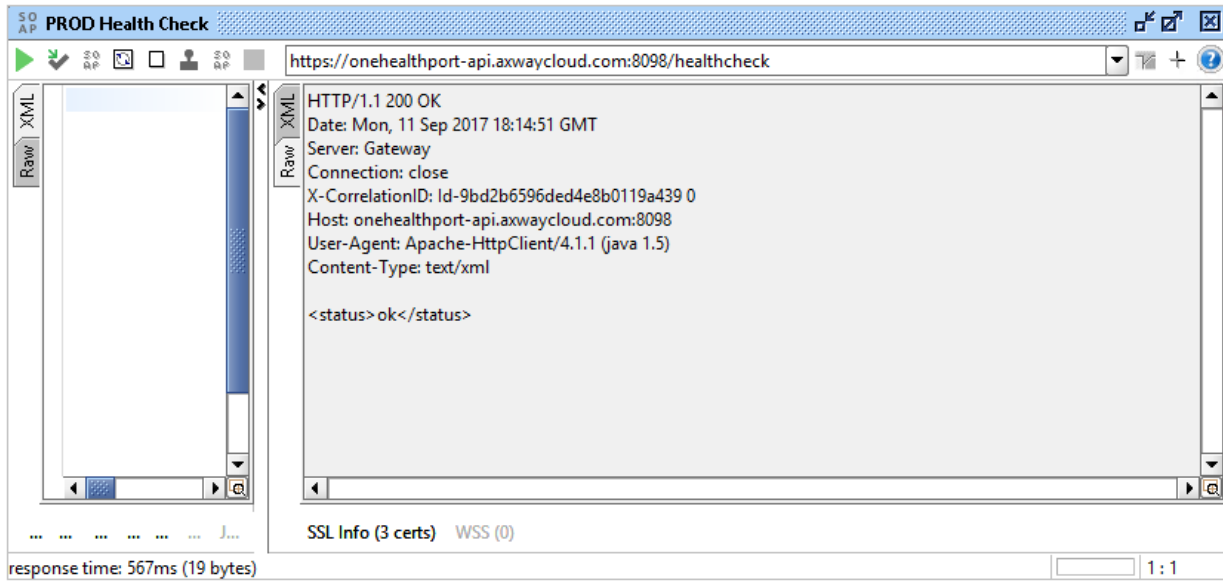
HealthCheck monitoring can also be set up for Prod systems. Follow steps 1-7 above. At step 6 instead of the URL for UAT, change the URL for Prod to: <https://onehealthport-api.axwaycloud.com:8098/healthcheck>

Once the Prod set-up is completed the following responses will display.

Prod Health Check XML Response



Prod Health Check Raw Response - The RAW output shown below confirms that the API is up and running.



Document History

Version	Date	Update Origin	Written by	Verified by
1.0	10/24/2017	Initial Draft	Kelly Llewellyn	HIE Operations
1.1	11/13/2017	Revised to clarify use for web services	Kelly Llewellyn	Sue Merk